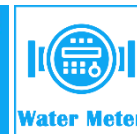


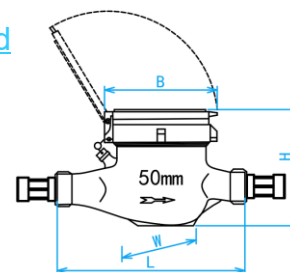
# EPOXY-COATED MULTI JET/ WOLTMAN DRY DIAL COLD WATER METER (R80)

COMPLY WITH ISO 4064: 2014



## Threaded End

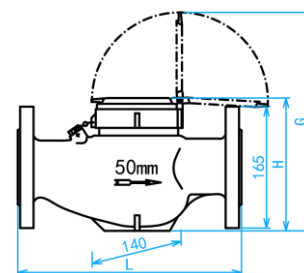
SIDE VIEW



## WMN50-MJ (MUTI JET)

## Flange End

SIDE VIEW



## WMN50F-MJ (WOLTMAN)

- 1.Colour ---Grey.
- 2.Information on the lid—
  - (a) Water meter usage monitoring purpose
  - (b) Date of installation and
  - (c) Remark.

### STANDARD SPECIFICATIONS

Water Temperature	0 ~ 30°C
Operating Pressure	≤ 1.6Mpa
Accuracy Class / Performance ratio (R)	R80

### COMPONENT PARTS

ITEM	PARTS	MATERIAL
1	Lid	Plastic
2	Sealed Register	ABS
3	Sealing Ring	Brass
4	Body	Epoxy-coated WMN050-MJ: Brass WMN050F-MJ: Ductile Iron
5	Multi Jet Impeller	Plastic

### FLOW RATE SPECIFICATIONS

SKU	R [Q <sub>3</sub> / Q <sub>1</sub> ]		Q1 Minimum flow rate [l / h]	Q2 Transitional flow rate [l / h]	Q3 Nominal flow rate [m <sup>3</sup> / h]	Q4 Maximum flow rate [m <sup>3</sup> / h]
	Horizontal	Vertical				
WMN050-MJ	R80	NA	312.5	500	25	31.25
WMN050F-MJ	R80	R50	312.5	500	25	31.25

### DIMENSIONS

SKU	SIZE(mm)	L(mm)	B(mm)	H(mm)	W(mm)	WEIGHT (kg)	PCS/CTN
WMN050-MJ	50	300	145	177	145	5.51	1

### DIMENSIONS

SKU	SIZE(mm)	L(mm)	H(mm)	G(mm)	Bolt Tightening torque	WEIGHT (kg)	PCS/CTN
WMN050F-MJ	50	300	185	300.5	70	11.2	1

\*1] Ensure water meter is installed in the correct water flow direction.

2] Always ensure to select the correct size and spec for the meter.

3] WMN050-MJ meters are only suitable to be installed in the horizontal position. WMN050F-MJ meters can be installed in the horizontal and vertical position. Failing to comply will result in damaging the meter and warranty will be voided.